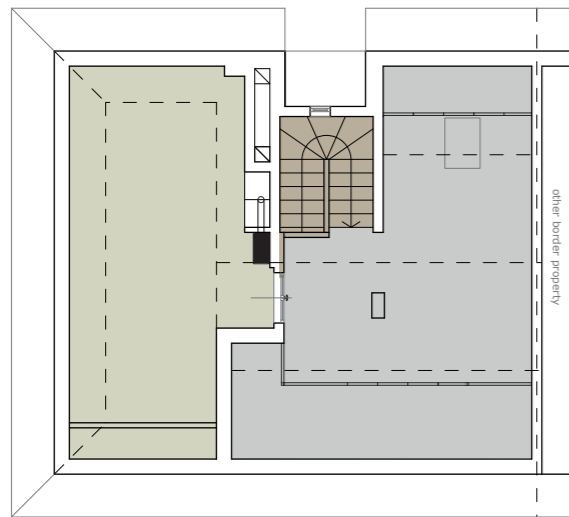


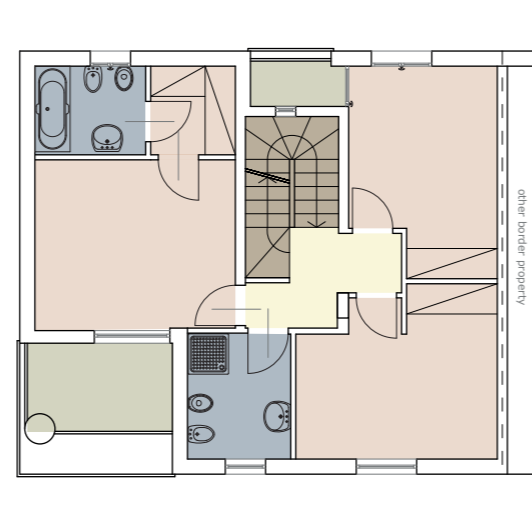
RENOVATION PROJECT  
Group 2



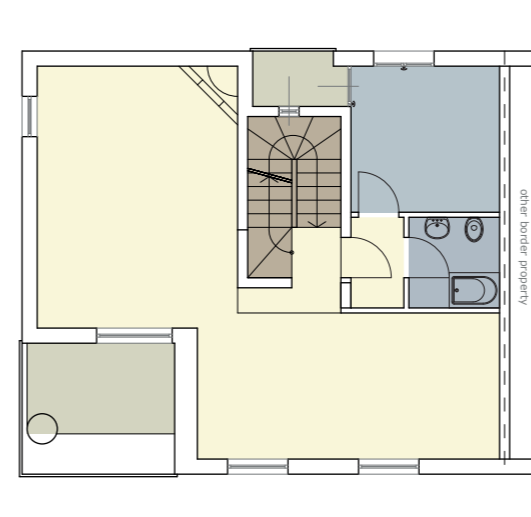
# 1.Spatial analysis (based on tje original layout)



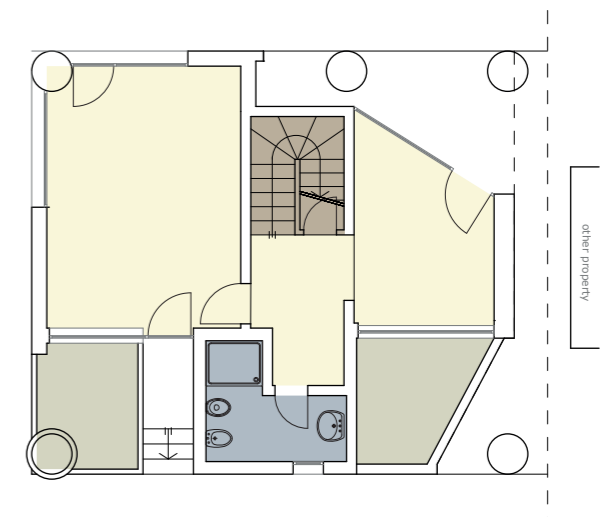
**ATTIC FLOOR**



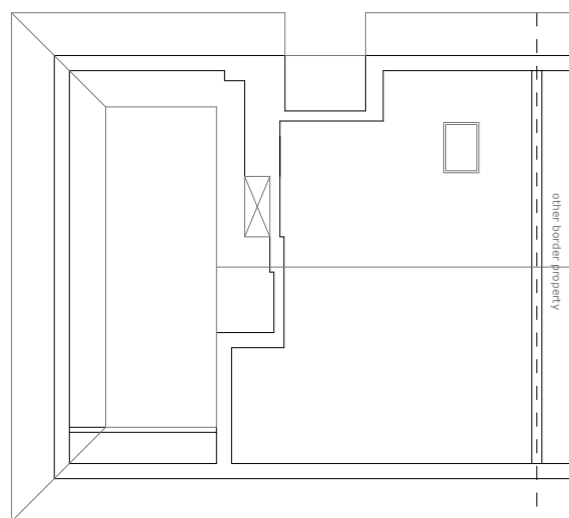
**2nd FLOOR**



**1ST FLOOR**



**GROUND FLOOR**



**ROOFTOP PLAN**



Toilets, there are five toilets in the main third floor living area, which provides the possibility for the renovation design of the apartment



The kitchen, with an open space, is isolated from the dining room by the toilet, and the connected balcony provides the possibility of storage space



Balcony outdoor space that provides good lighting for the interior and provides a multi-level living experience for the occupants (increased outdoor contact, plantable, balcony garden, etc.)



The bedroom, the primary and secondary bedrooms have better lighting, the room is transparent, and the landscape is comfortable, which is conducive to improving the living experience.

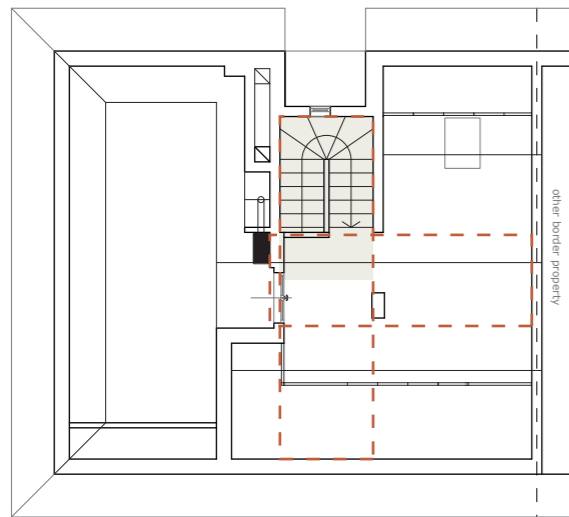


Public space, public space and entry space The space is spacious and bright, suitable for family interaction and recreation, and provides the possibility of receiving guests/gathering Spaces.

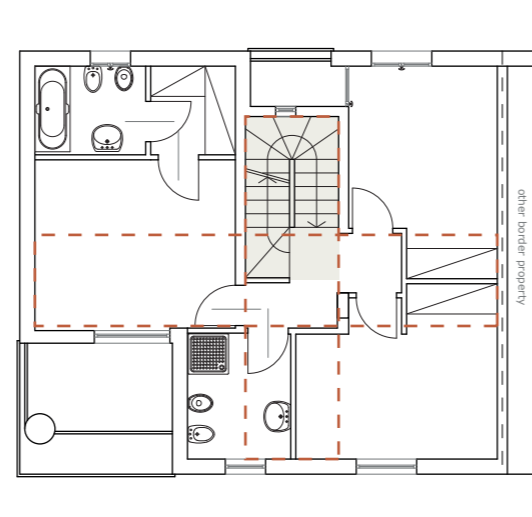


Free transformation space, spacious space, connected outdoor platform to add fun to the activity space set up here (children alone space, family leisure space, reading space, sharing space, etc.)

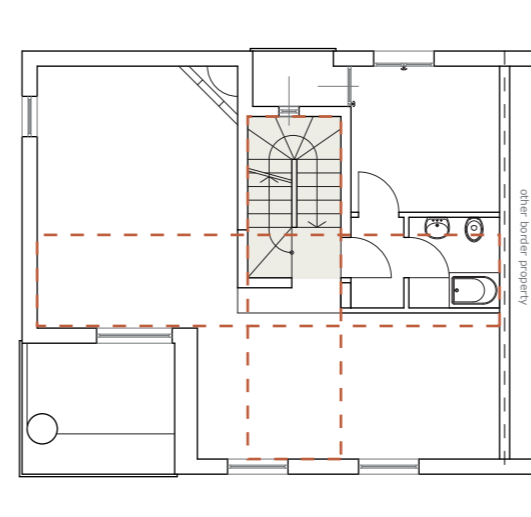
## 2. Locate the elevator by combining the staircase and functional layout



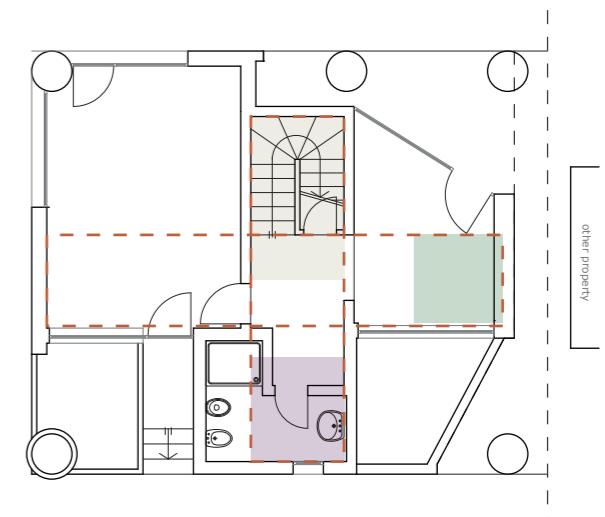
**ATTIC FLOOR**



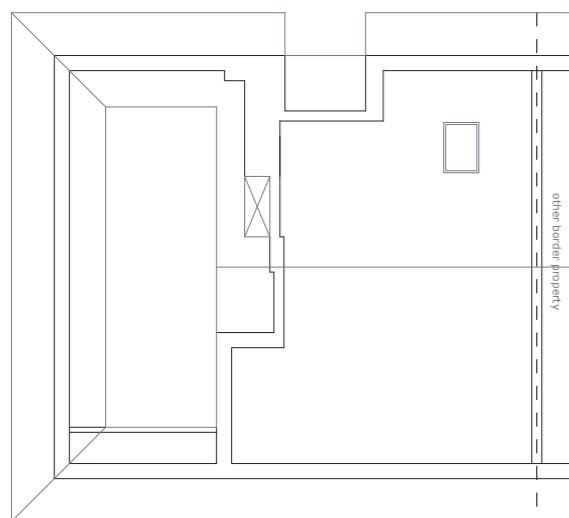
**2nd FLOOR**



**1ST FLOOR**



**GROUND FLOOR**



**ROOFTOP PLAN**

The staircase is located in the middle position, and the space layout of the building itself is relatively compact, and the staircase space becomes the main partition space and functional space, reflecting the setting of the elevator location. Transition? Connection? Functional space?).

Through the alignment, the area of possible location of the elevator is marked with a red dashed line.

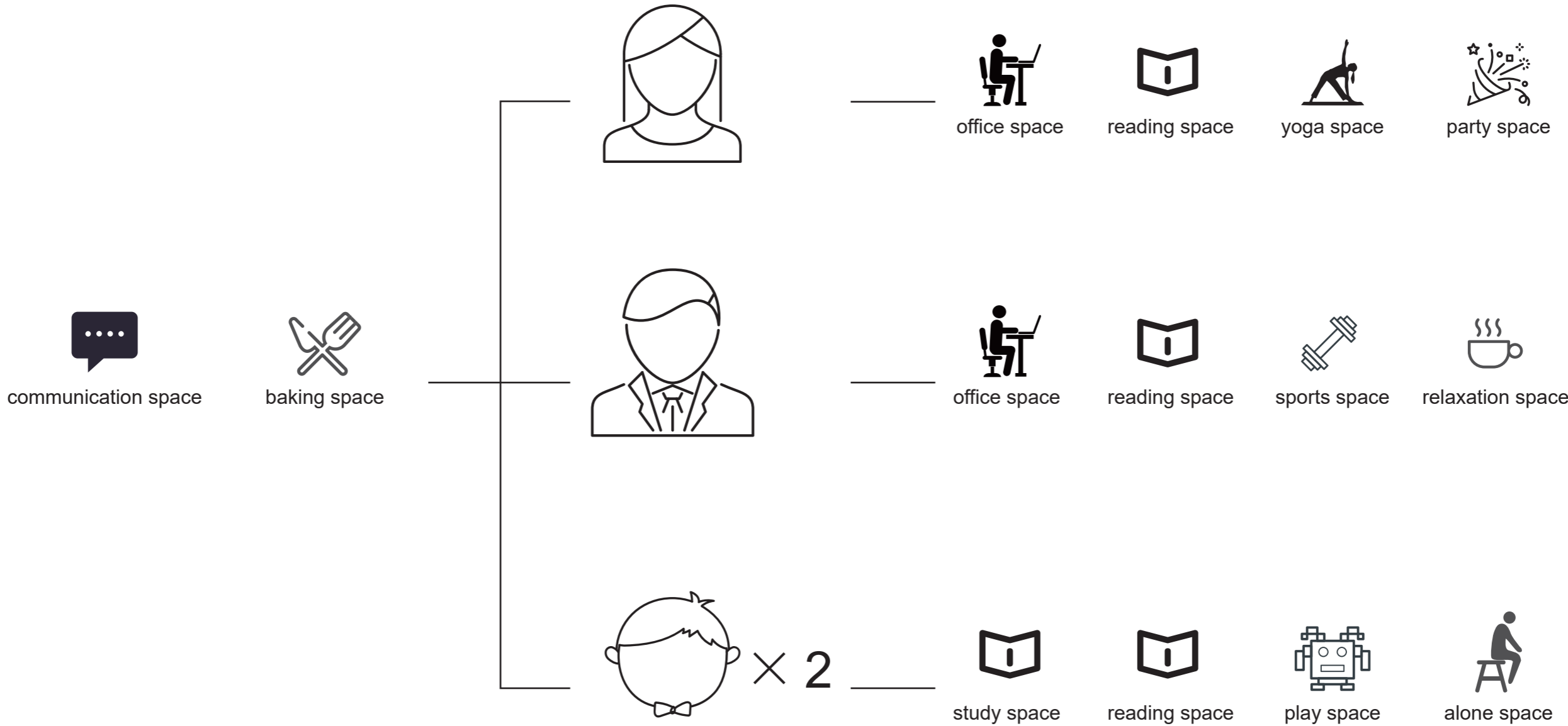


Position 1

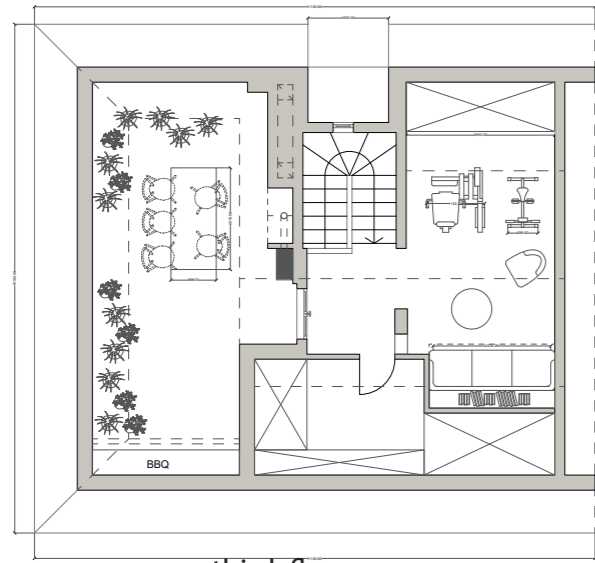


Position 2

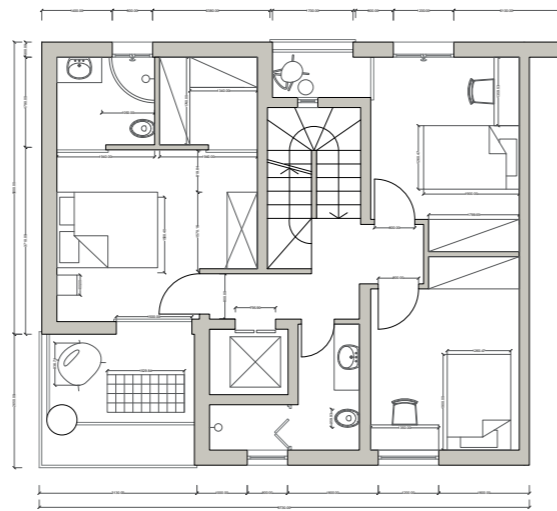
3. Analyze needed home space based on family members' configuration.



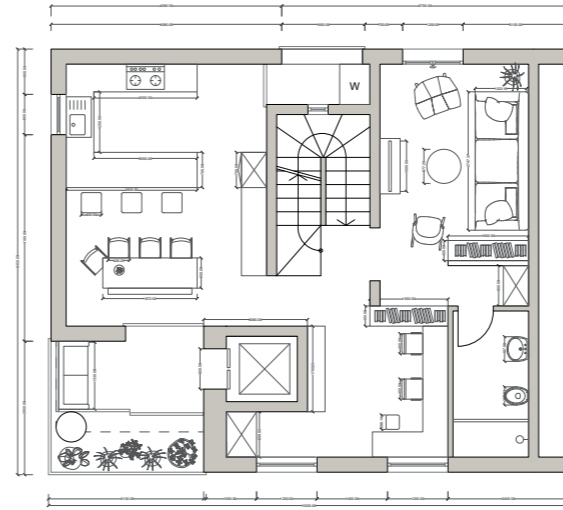
# 4. Two proposal



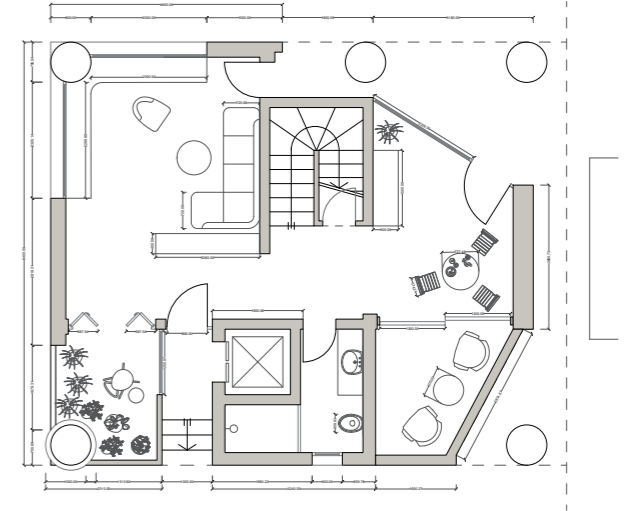
third floor



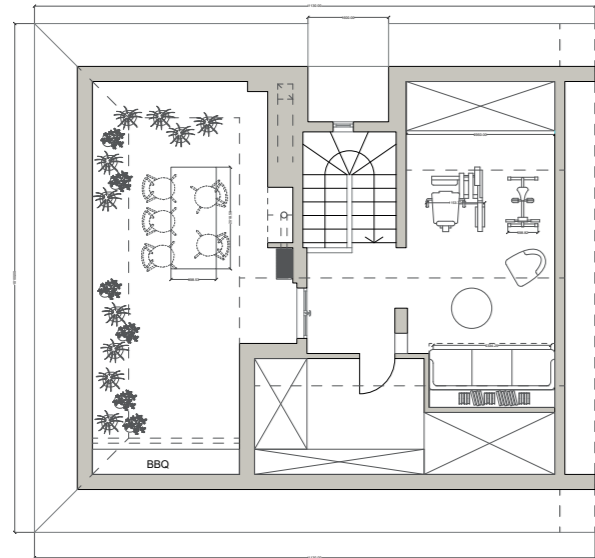
second floor



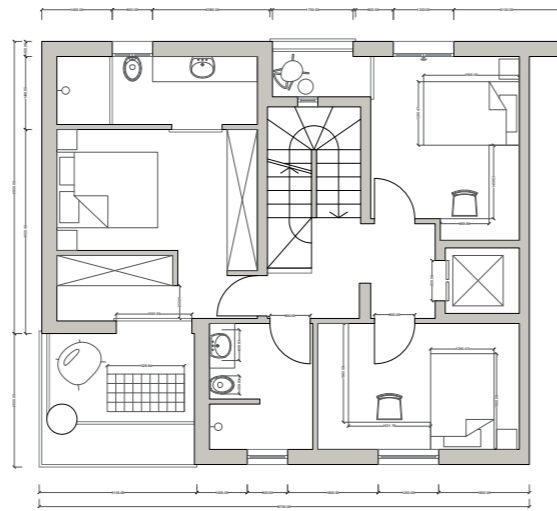
first floor



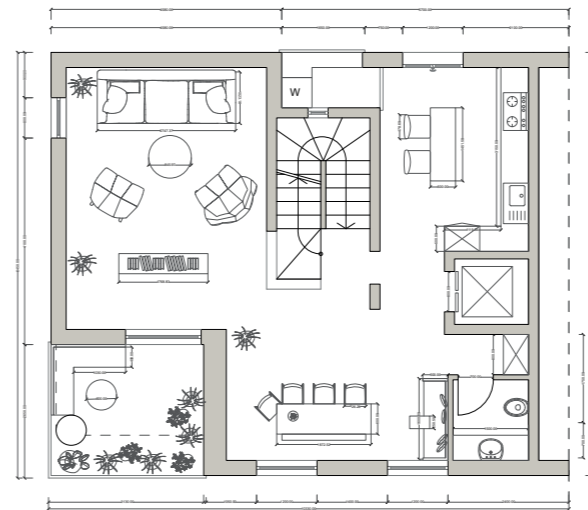
ground floor



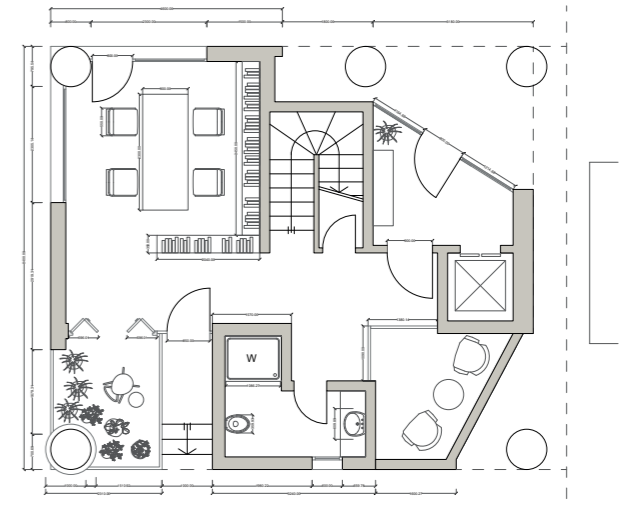
third floor



second floor

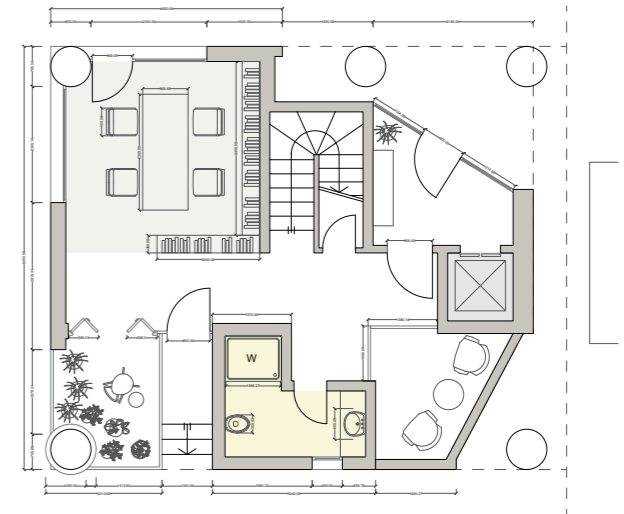
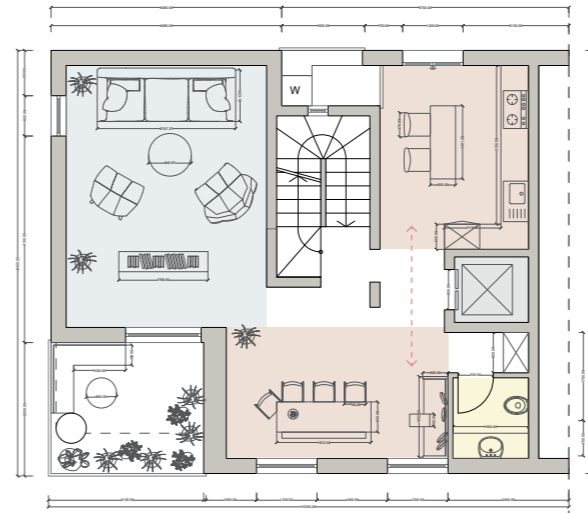
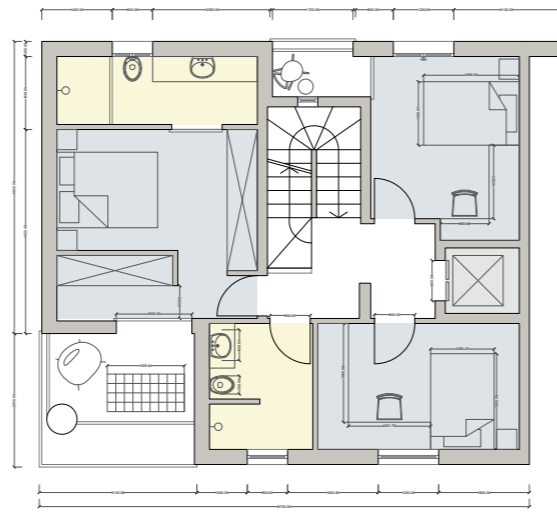
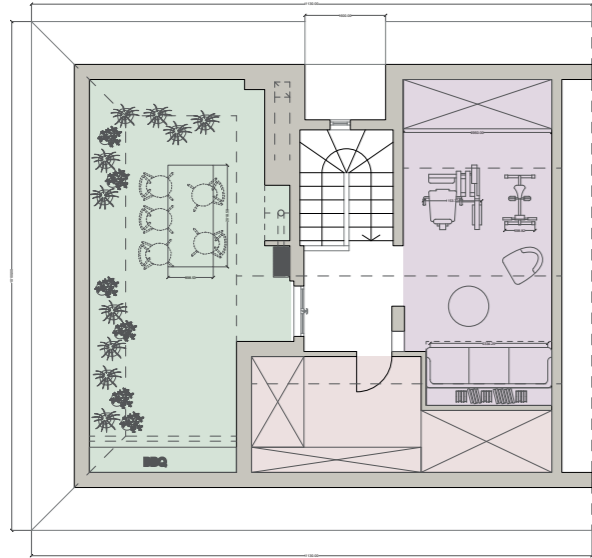
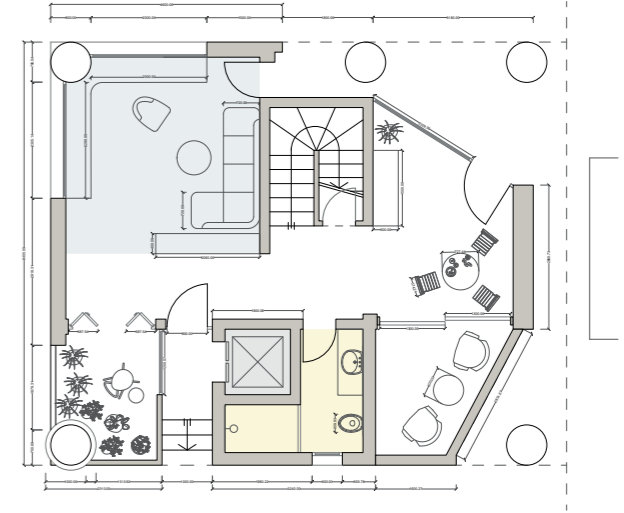
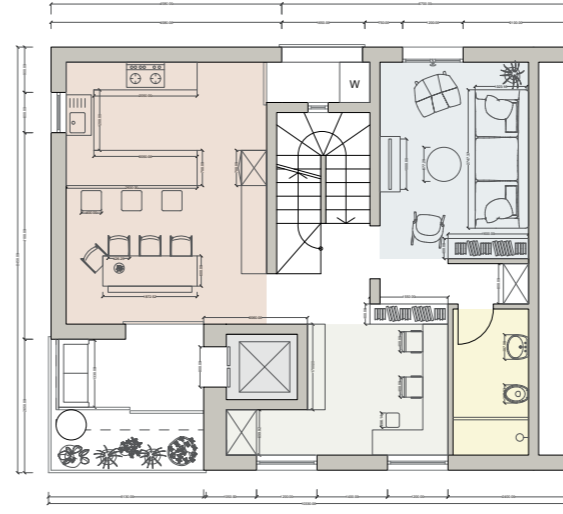
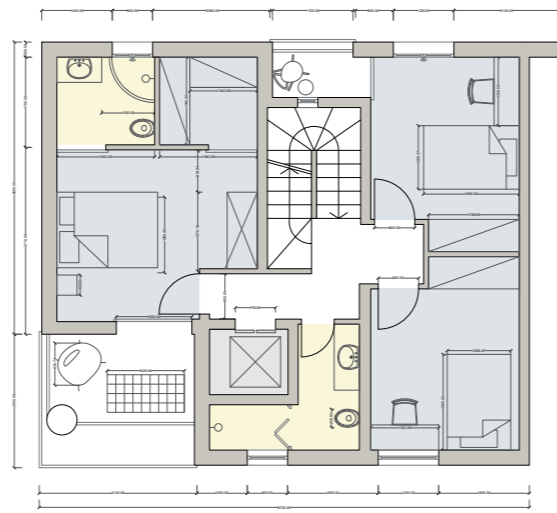
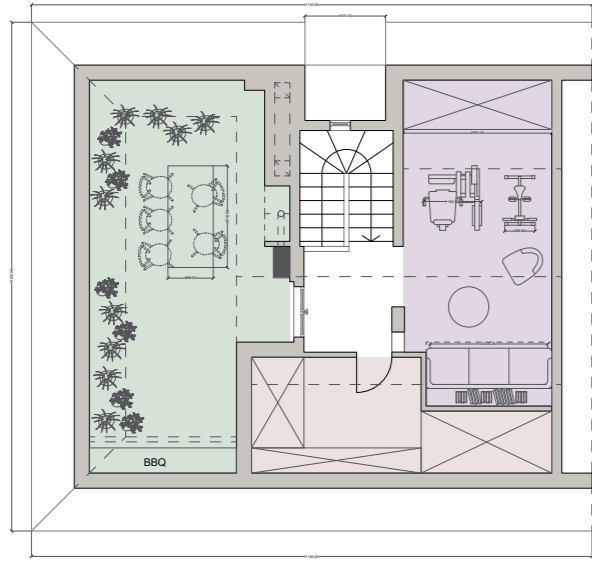


first floor



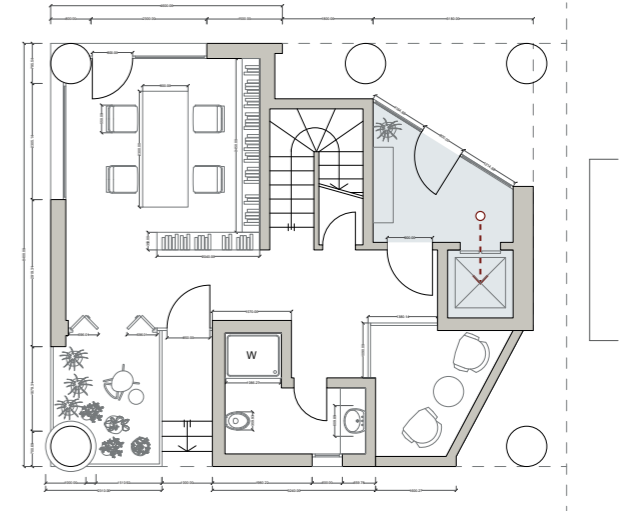
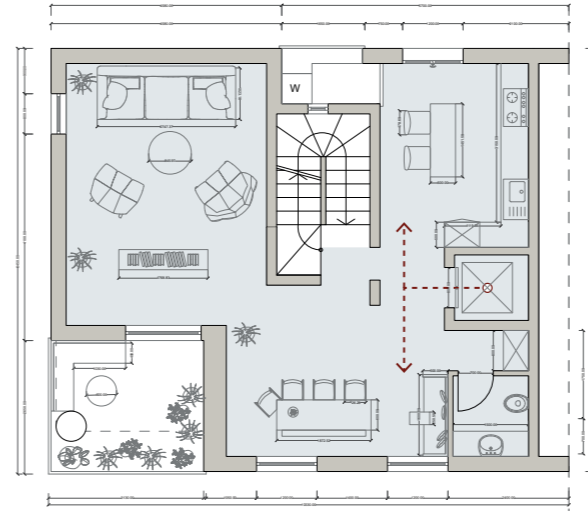
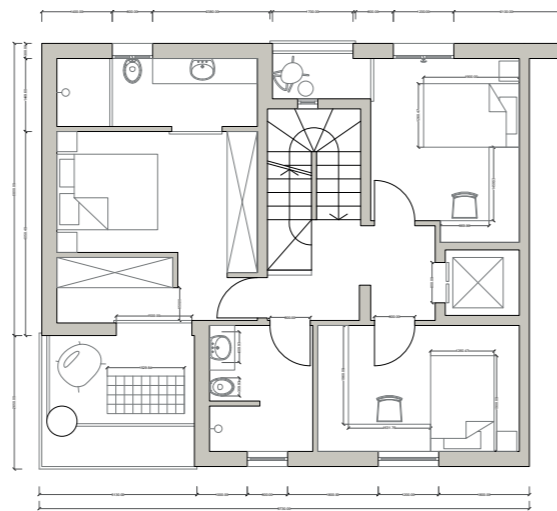
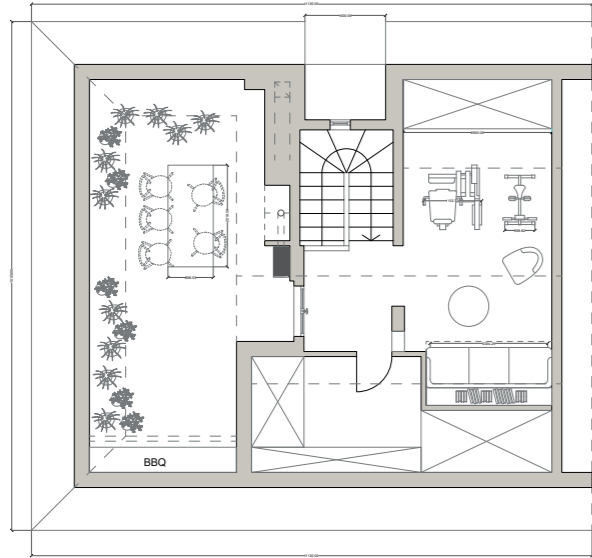
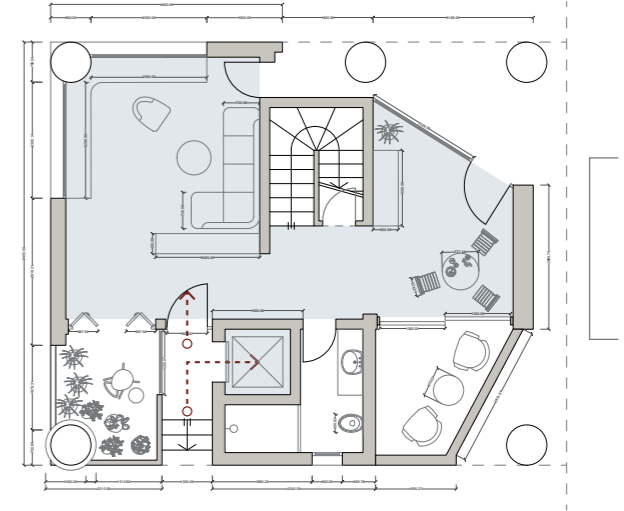
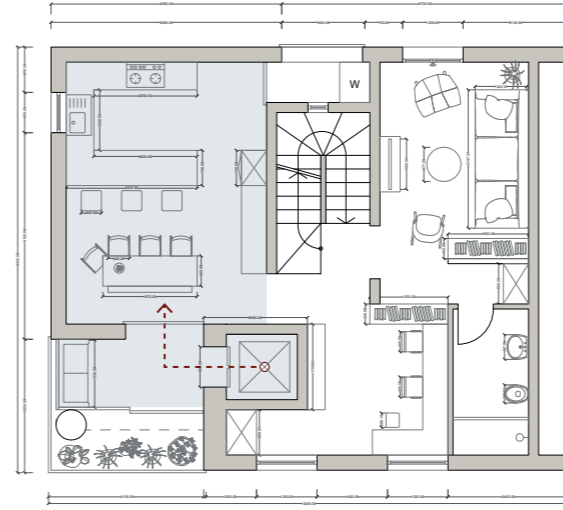
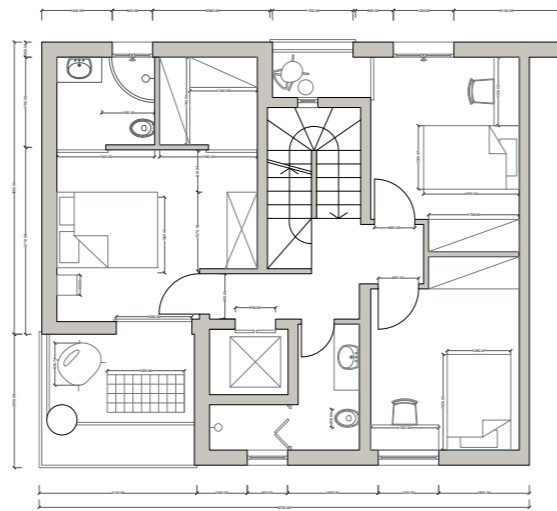
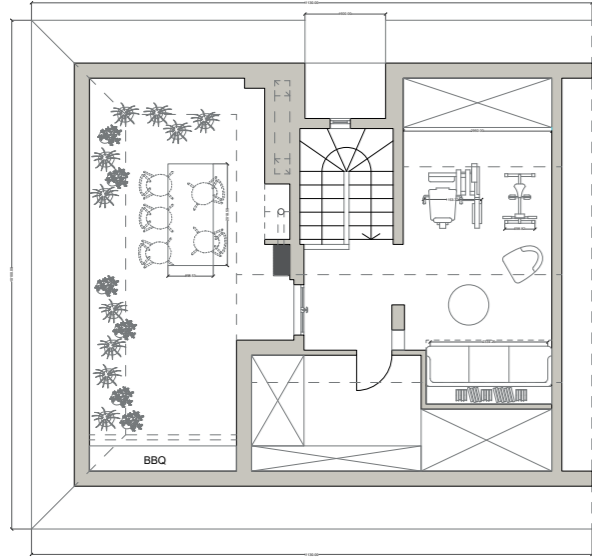
ground floor




# 5.Functional diagram



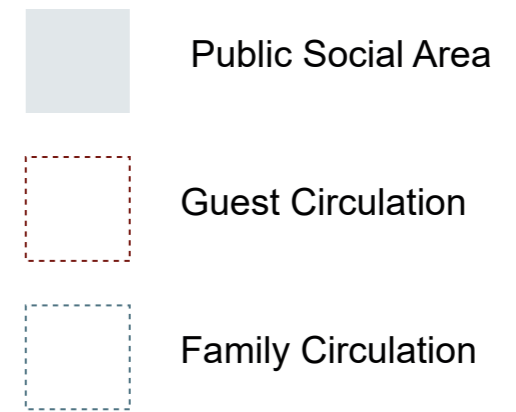
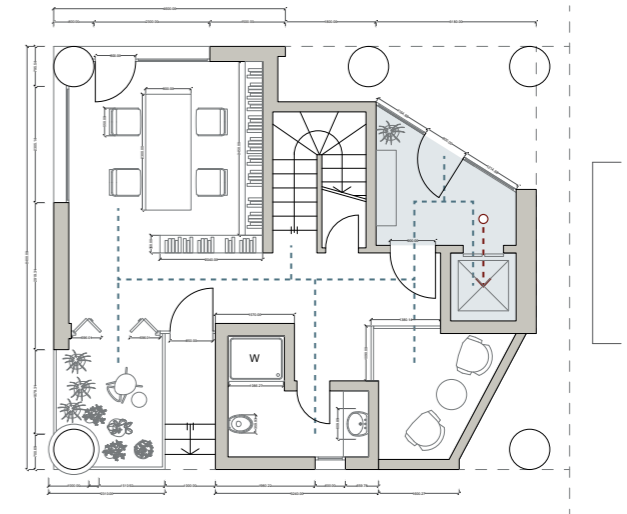
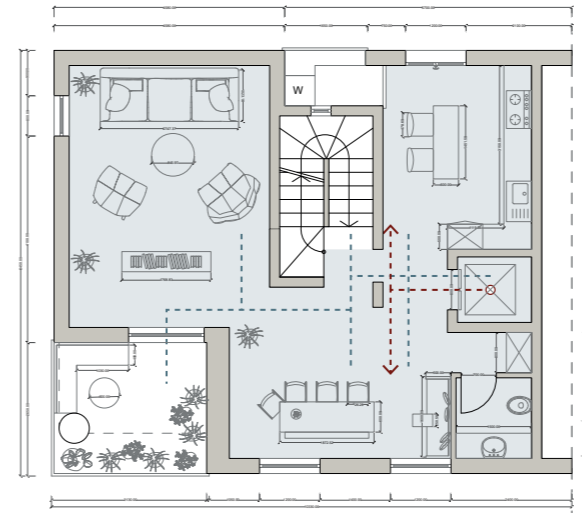
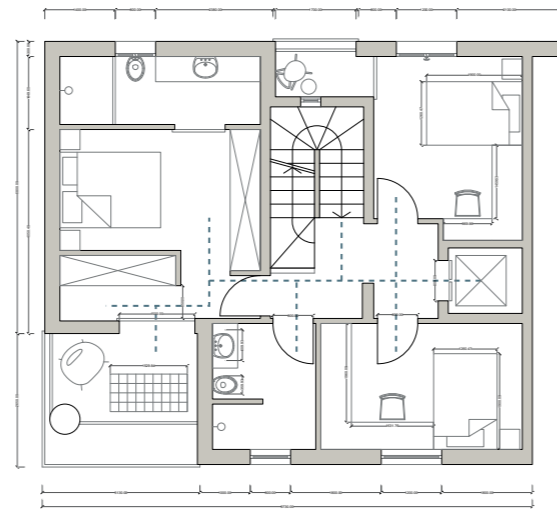
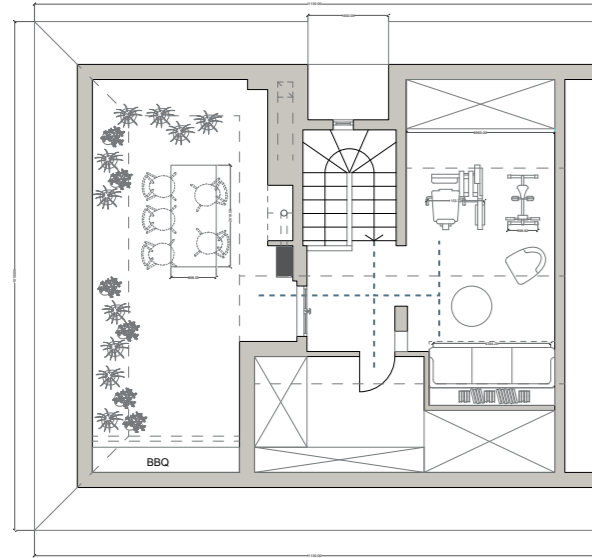
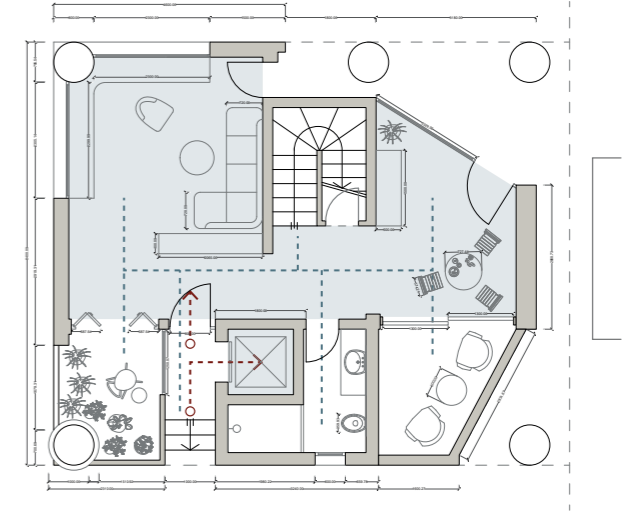
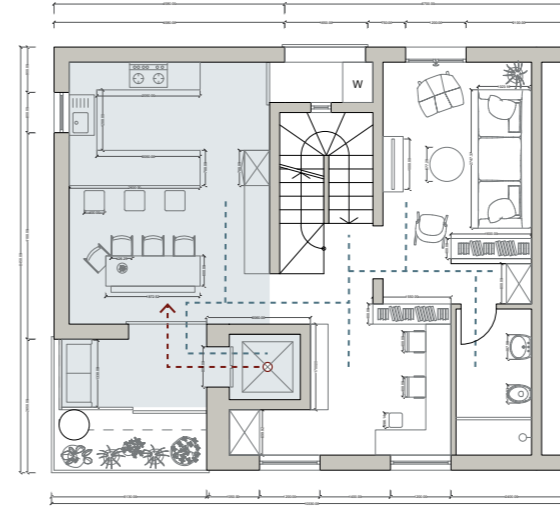
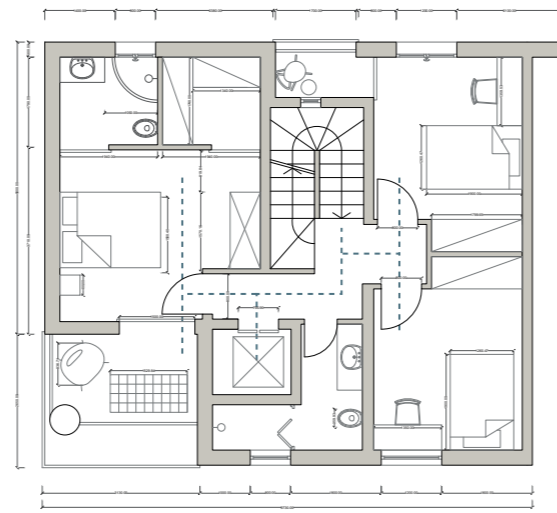
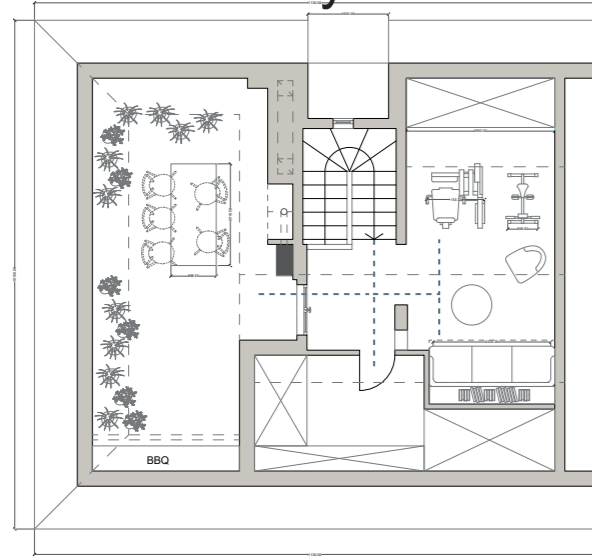
- Bedroom
- Living Room
- Family study area
- Kitchen / Dining room
- Toilet
- Elevator
- Sports and Leisure Area
- Storage Space
- Open Terrace

# 6.Public and private analysis



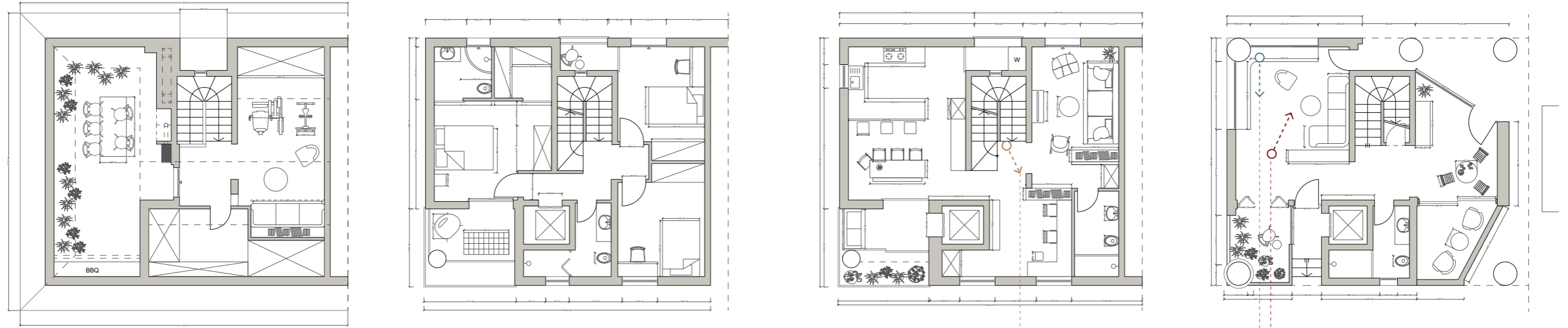
-  Public Social Area
-  Guest Circulation
-  Guest Circulation

# 7.Circulation analysis





# 8.visualization



# 8.visualization

