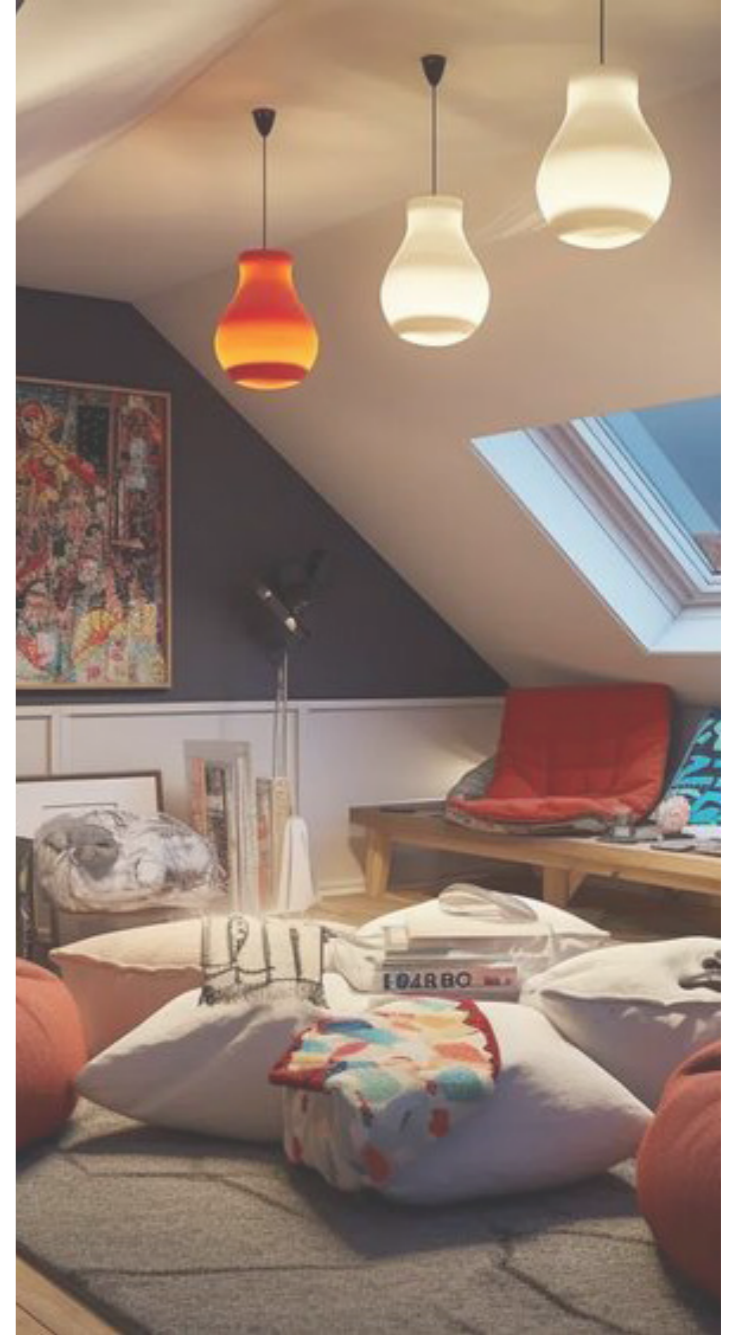




RENOVATION PROJECT

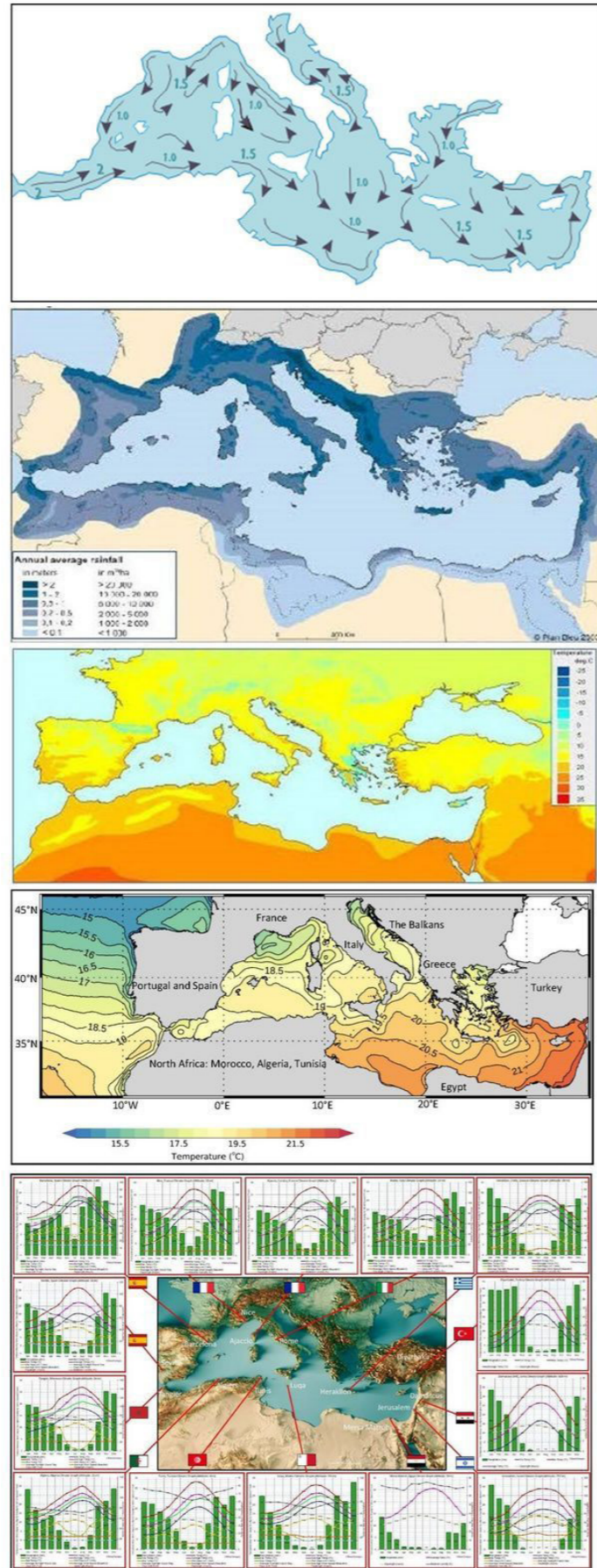
VIA DELLA BIRONA 26
GROUP 1



INTRODUCTION

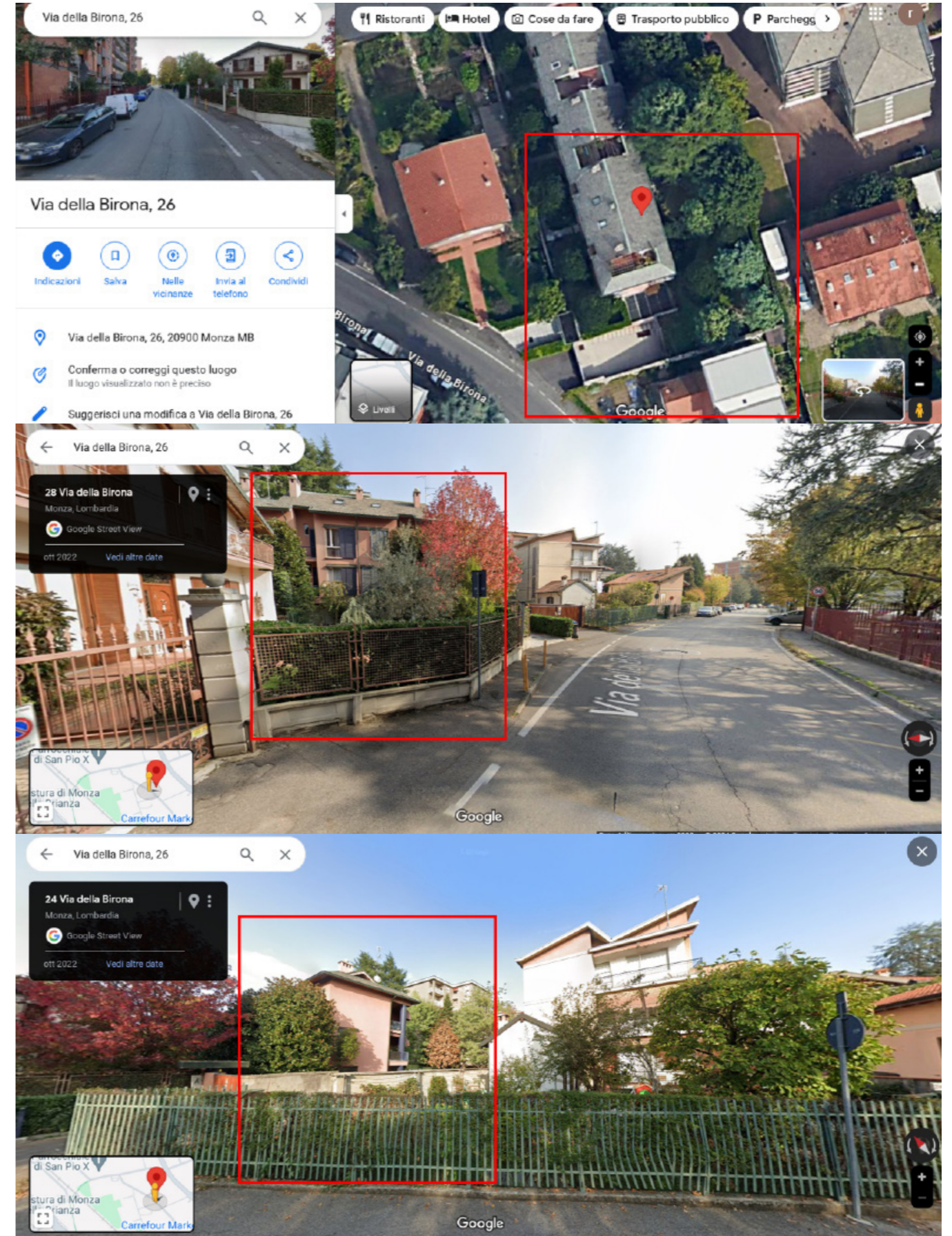
Monza has a typical Po Valley sub-Mediterranean climate with short cold winters and warm summers. Precipitation is abundant, being highest in autumn and lowest in winter and summer.

Reference: landarchconcepts.wordpress.com

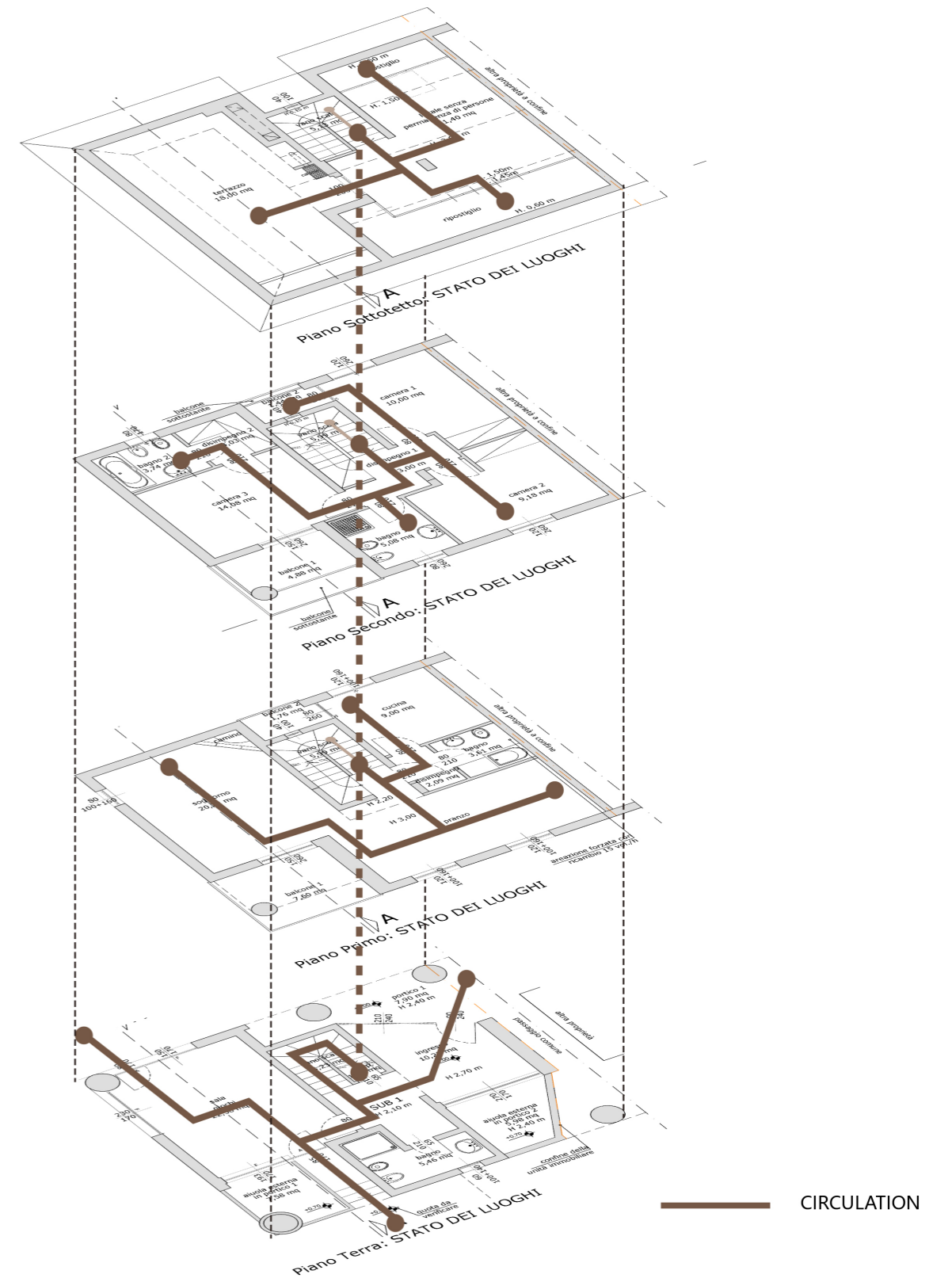
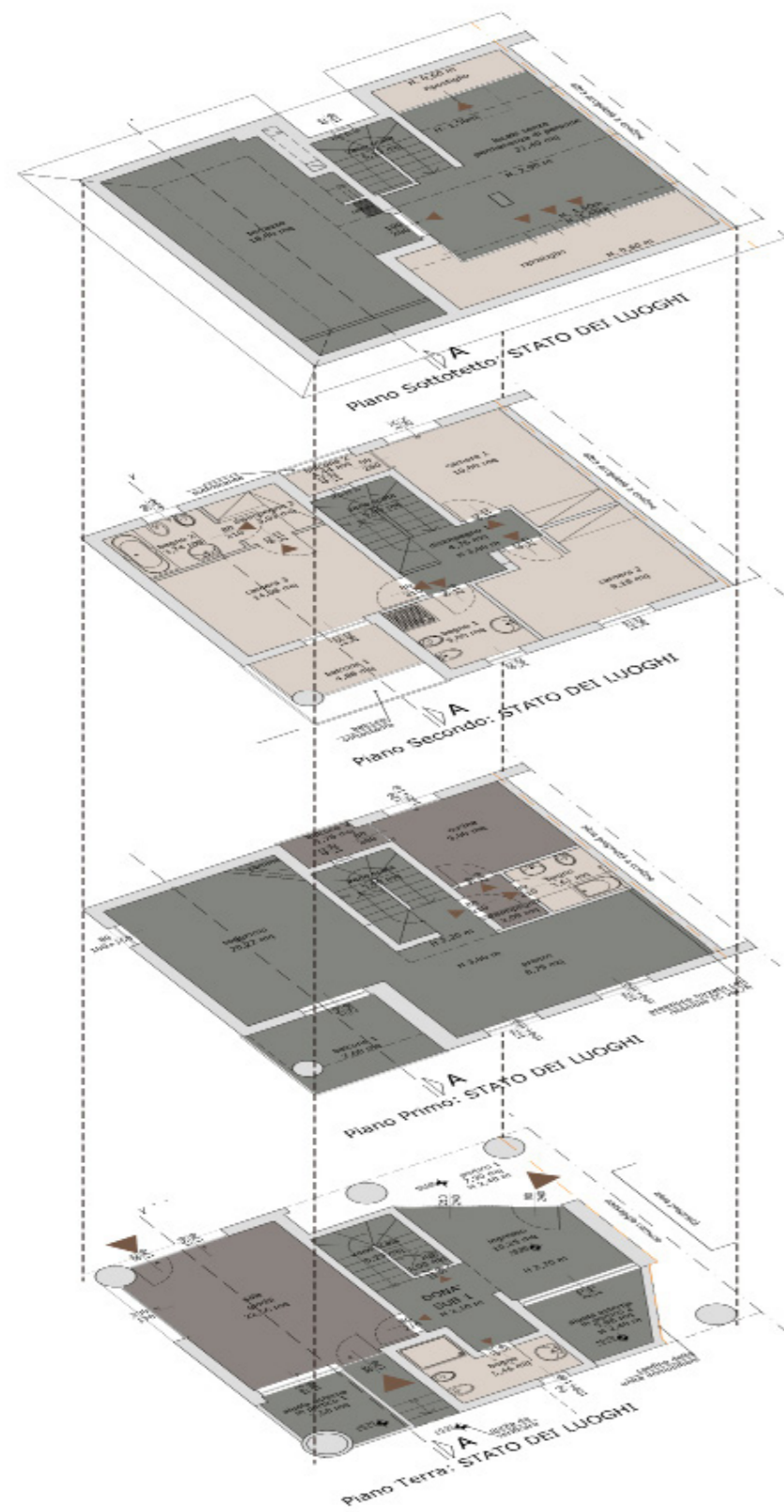


All About the Mediterranean Climate

LandARCHConcepts © 2021



ANALYSIS OF ORIGINAL LAYOUT

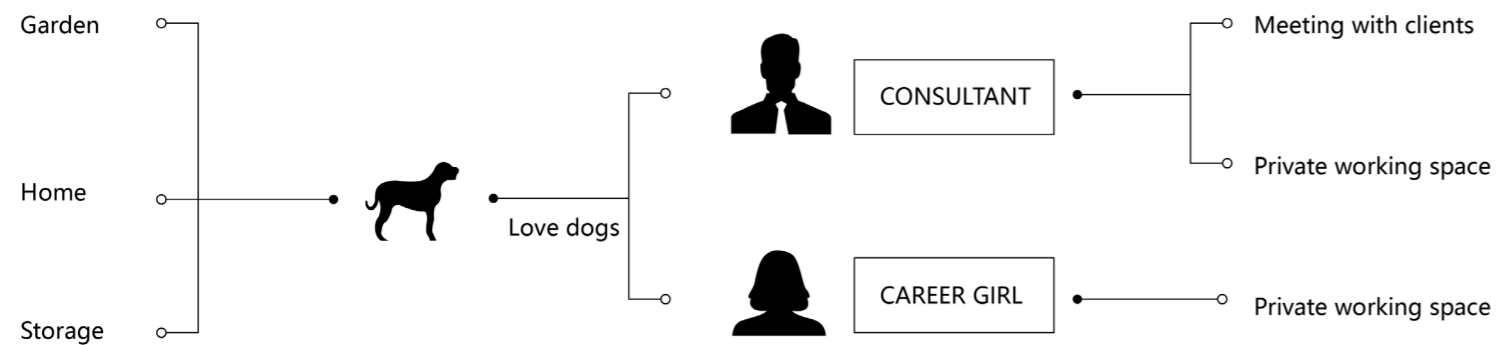


CLIENT PROFILE

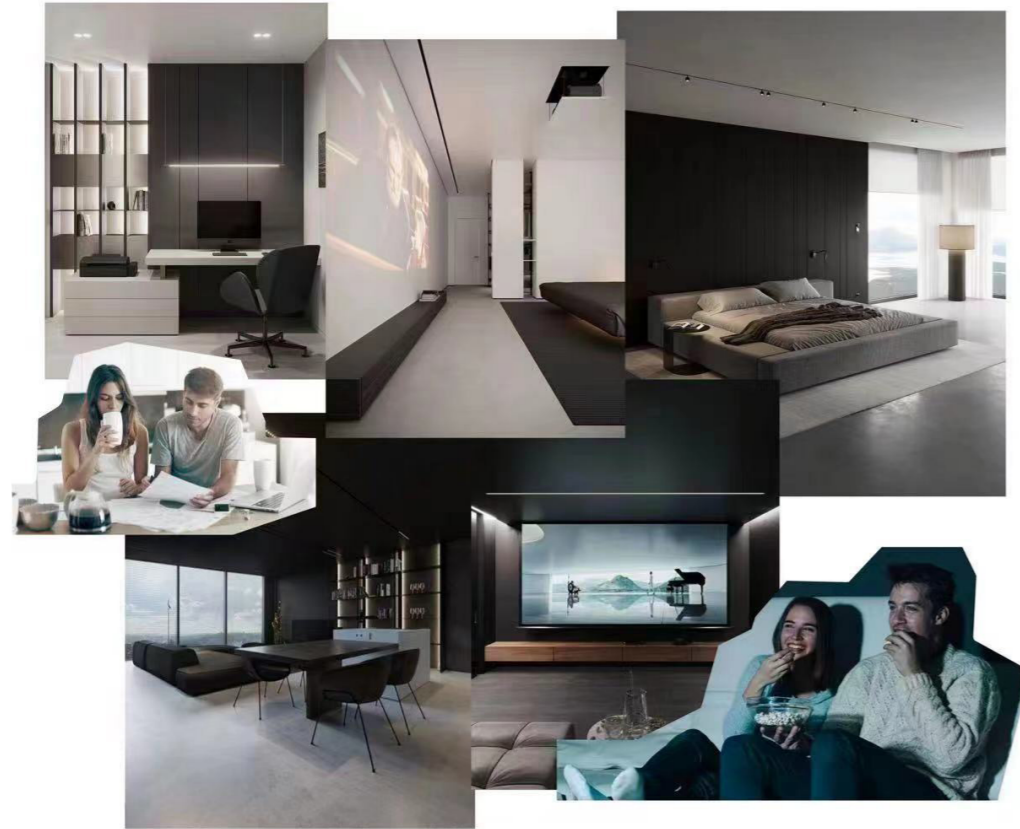
The target user for this renovated house will be a young couple no older than 32 who has no kids as of yet, have their own occupations and often have friends around. Based on their lifestyle, it's important that this project enable the owner to host gatherings with friends and highlight the social aspect of their life. Since the couple are a pair of young professionals, spaces for them to work throughout the day is also essential for the house. As they have no kids, the space in the original house that's originally for kids can be changed to a multifunctional area to further accomodate their social lifestyle as an entertainment area, as another work space or a place for their potential pets. However, this multifunction area can potentially be a room for any future kid they might have.



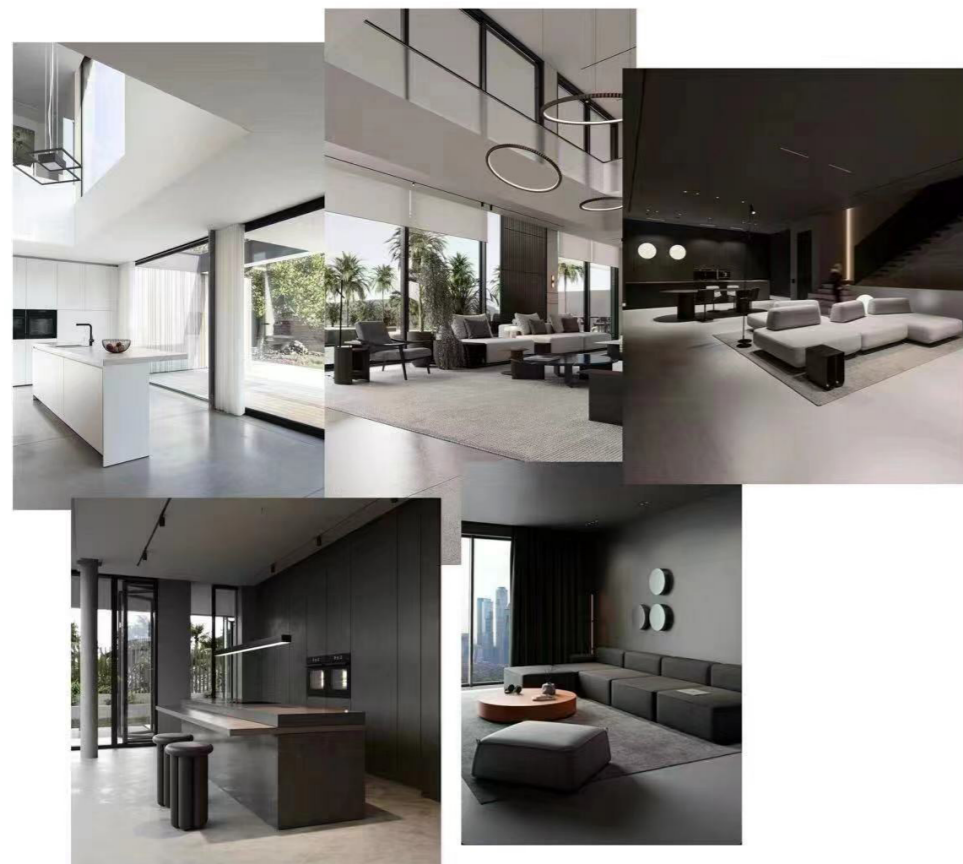
USER REQUIREMENTS



SPACE REFERENCE



CLIENT USES



COLOUR SCHEME



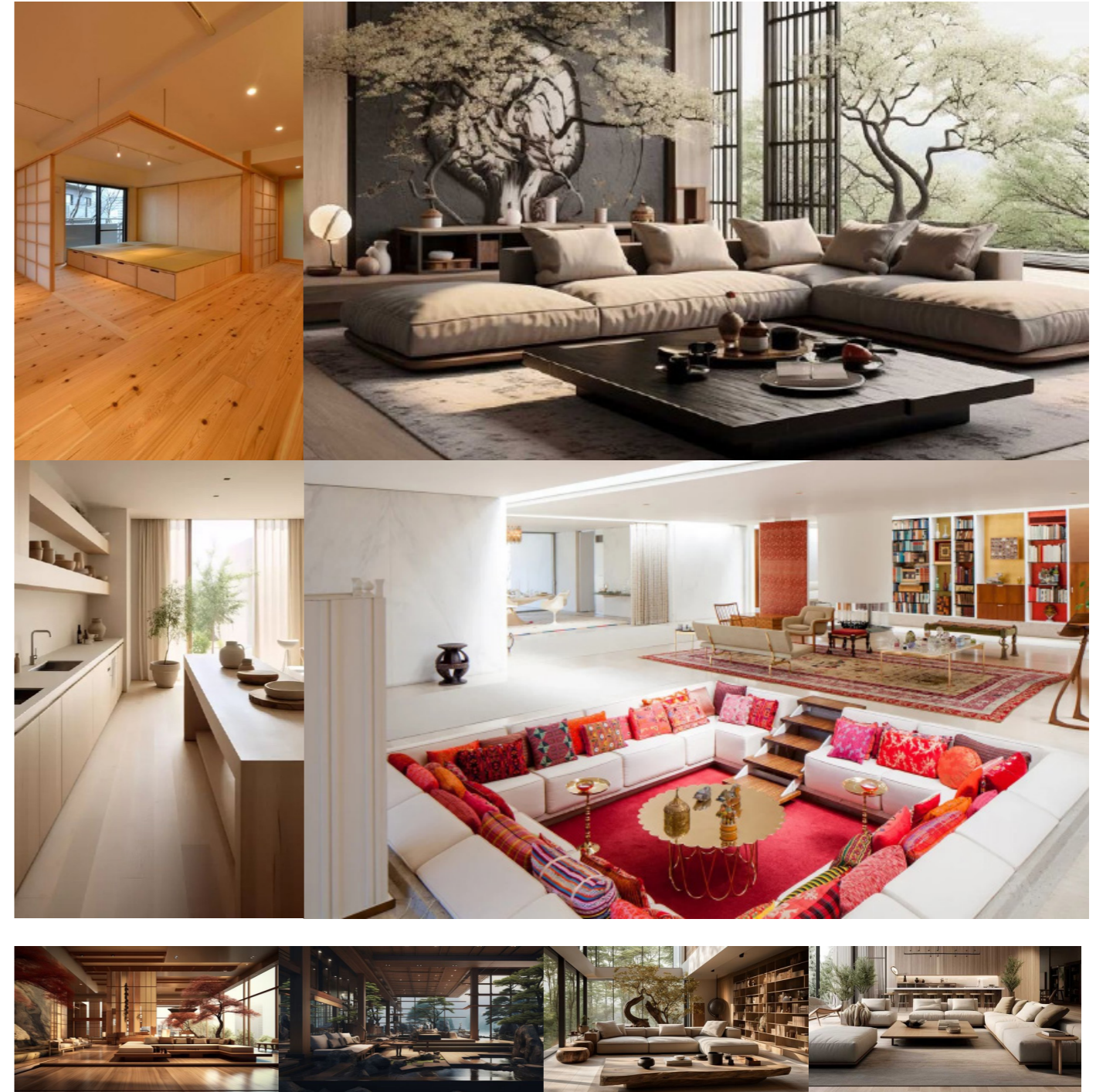
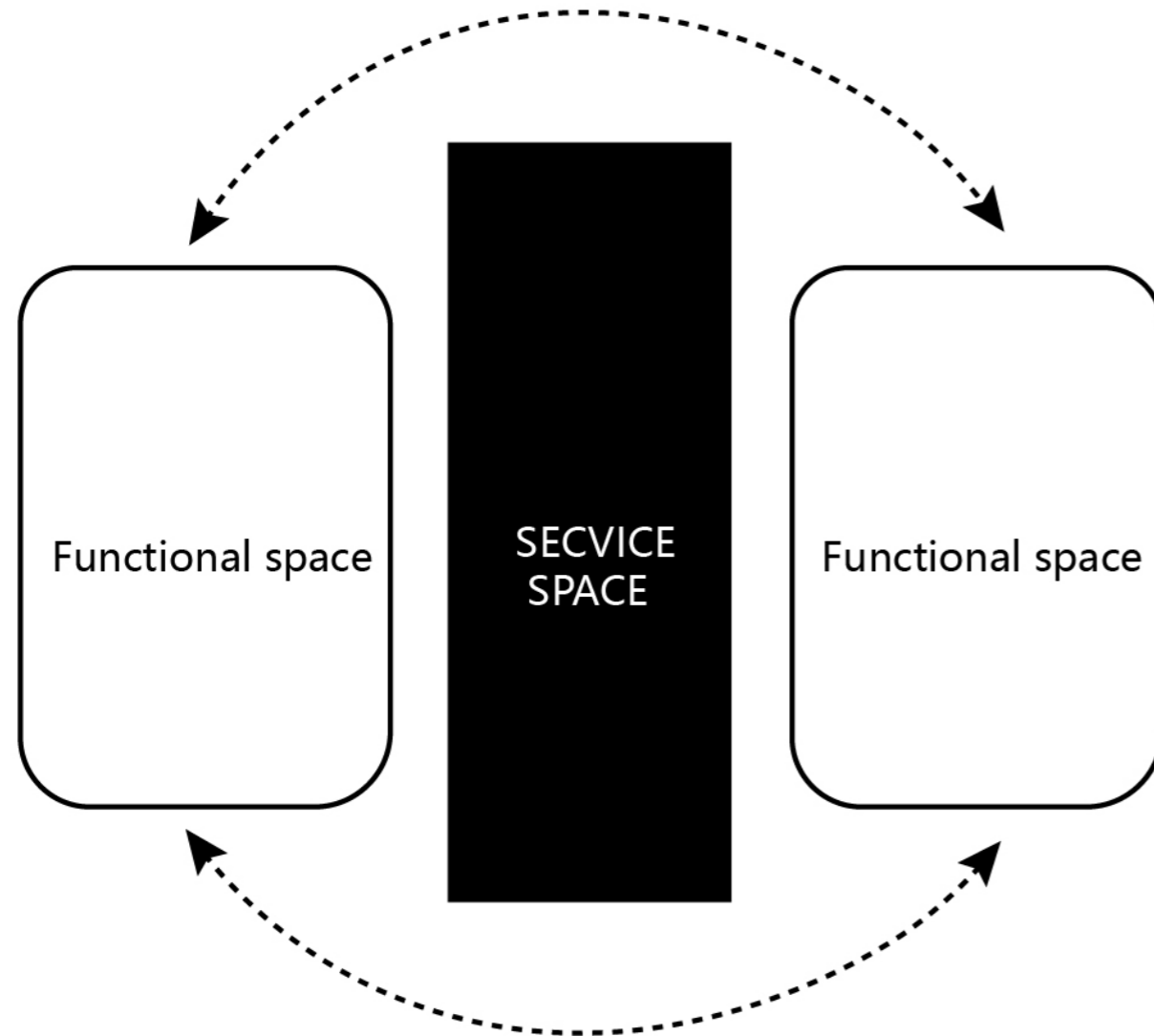
LIGHTING

The interior styling for this house will divert from its original traditional Italian style. The interior will be done in contemporary and minimalistic style, which highlights clean and sleek lines, highlights the beauty of the simplicity of the furnitures and lack of decors, and appeals to younger clients. Adding LED strips at certain parts around the house adds a different ambiance to the space that regular ceiling lamps cannot give. Keeping note of their activities and how they'll use the house is important, but considering what colours and lights to use is just as important the atmosphere will impact their feelings and how comfortable they'll feel whilst living there.

CONCEPT

OPTION 1

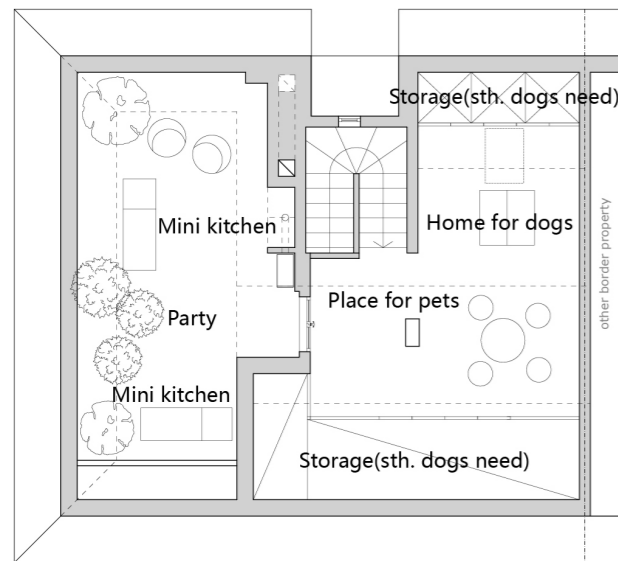
OPTION 2



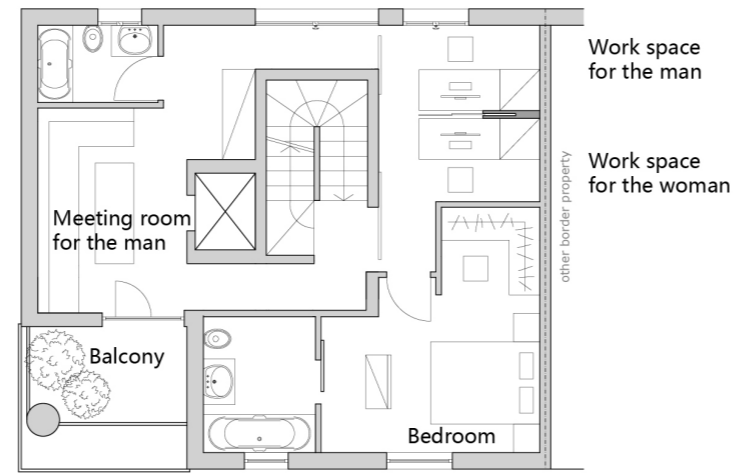
Service Spaces such as elevators, stairs and toilets are placed in the middle, and functional areas are connected to the original corridors through the reconstructed balconies. The functional areas on both sides are separated but integrated, and the service area in the middle can be better used for the functional area.

Designed to have a flexible space where public place have private cabinets that can be merged with the public place if needed. Young people most of the time needs dynamic spaces that can adapt to their needs.

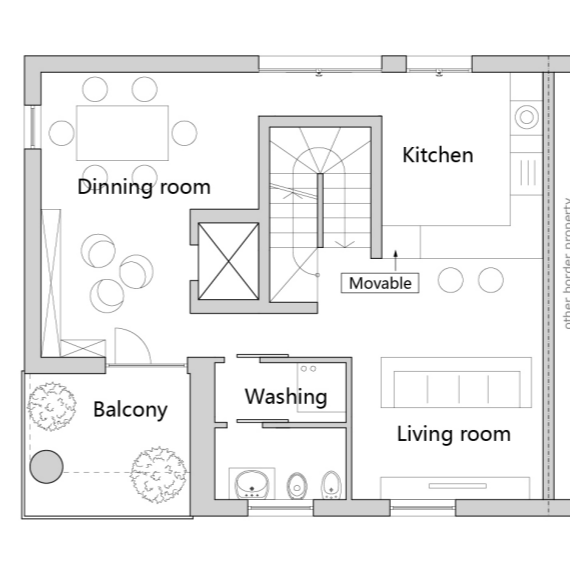
FUNCTIONAL PLANS (OPTION 1)



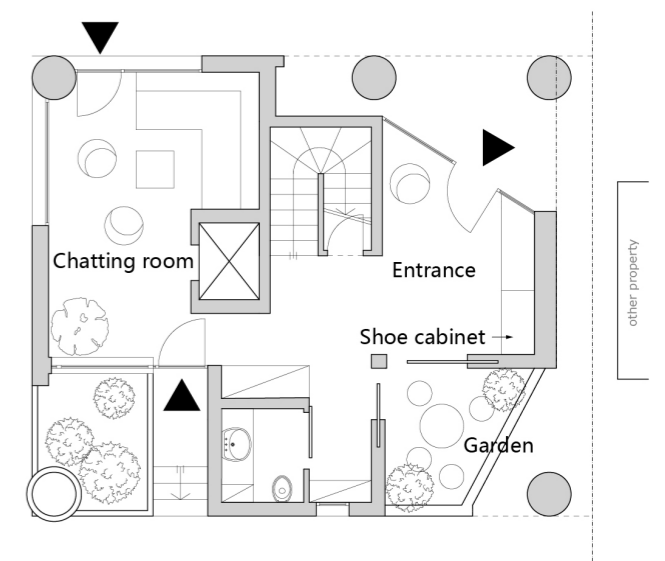
THIRD FLOOR



SECOND FLOOR



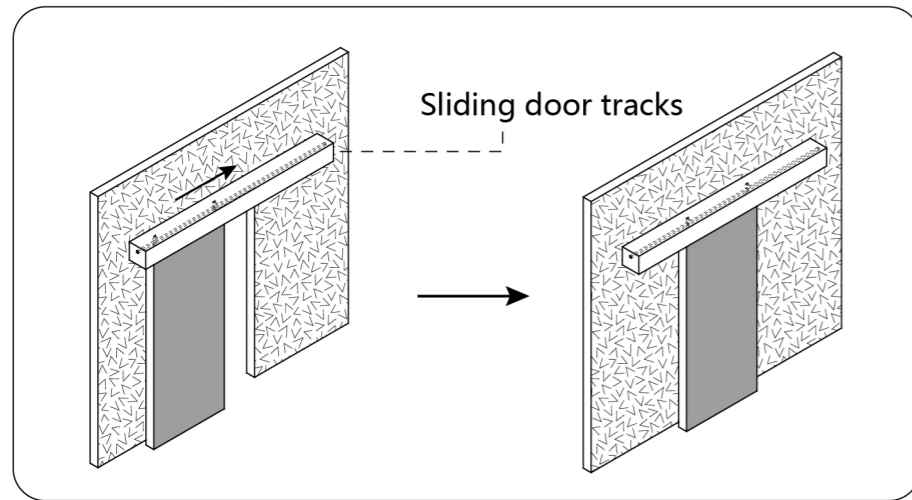
FIRST FLOOR



GROUND FLOOR

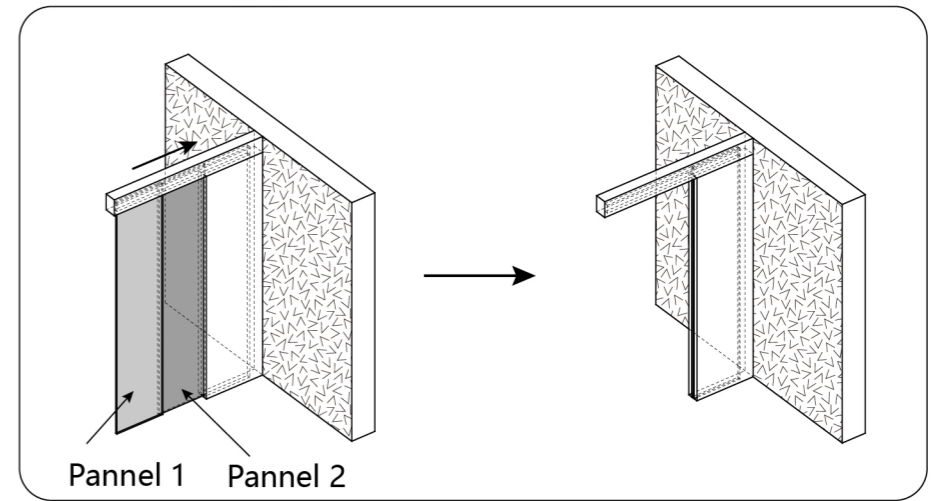
FURNITURE DETAILS

1) Sliding door



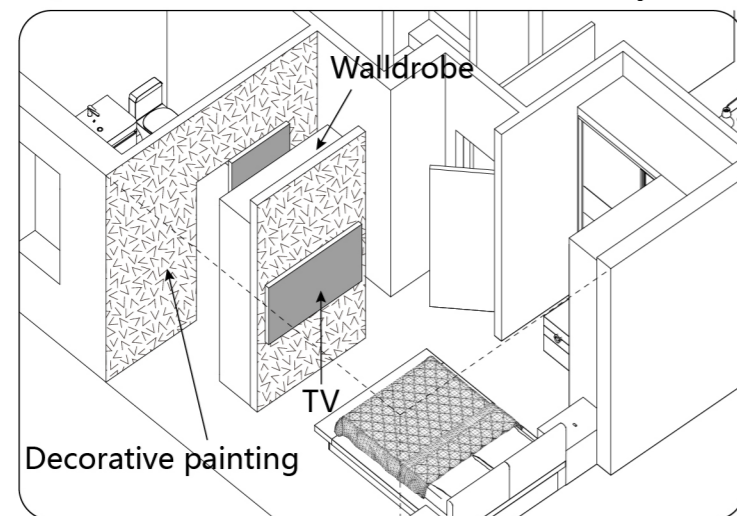
Doors in all central service areas are of this type. Save indoor door space.

2) Sliding panels



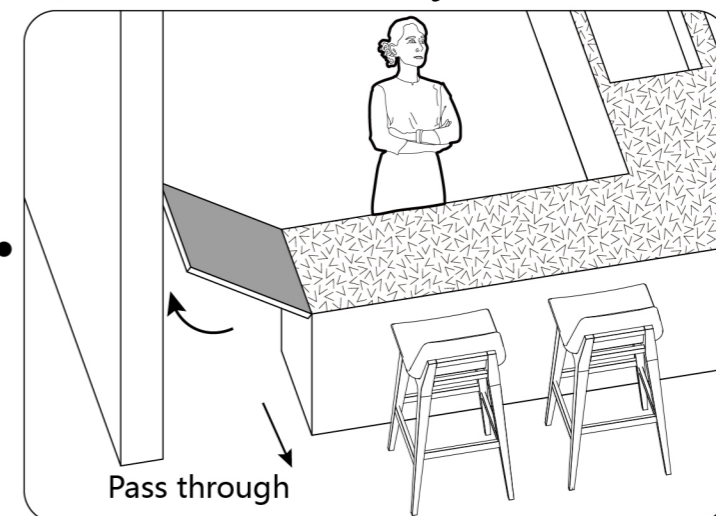
It can ensure the privacy of the office space on both sides and can also be opened as a shared office space.

3) TV wall and decorative painting

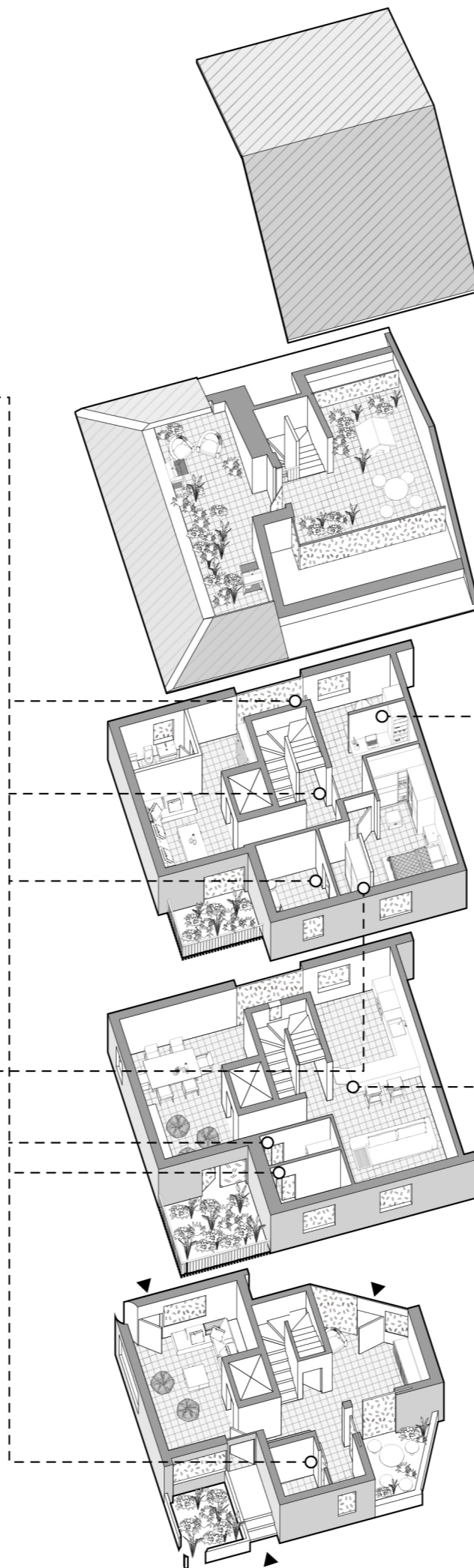


Lockers and TV walls are placed at the bathroom door of the bedroom to avoid the bathroom entrance facing the bedroom space, while forming a complete decorative wall.

4) Removable tray table



The person in the kitchen can lift the tray table directly and bring the food to the living room.



RENDERINGS

Dinning room + Library



Living room + Kitchen



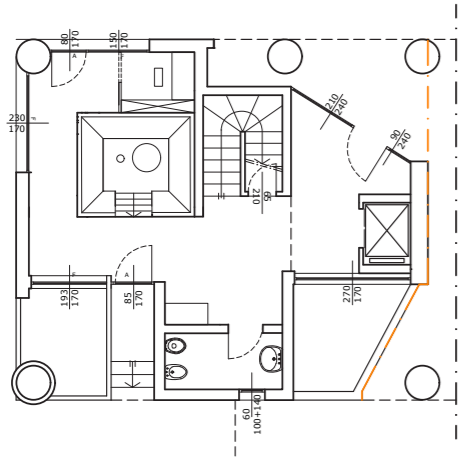
Bedroom



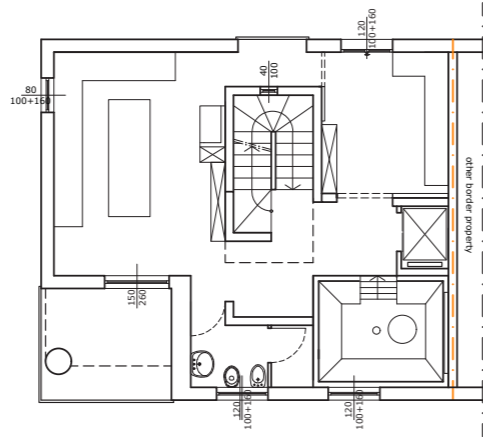
Roof (dog's house + chatting room)



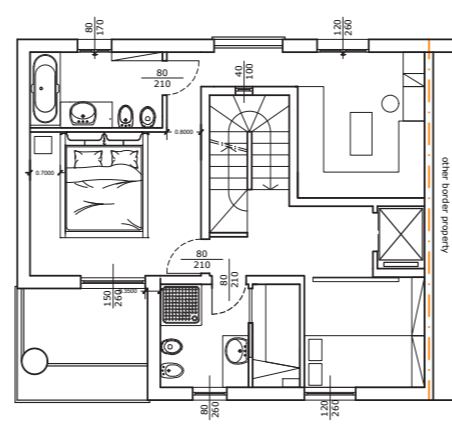
FUNCTIONAL PLANS (OPTION 2)



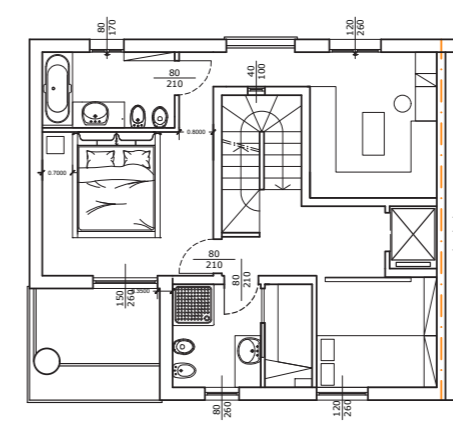
Ground floor



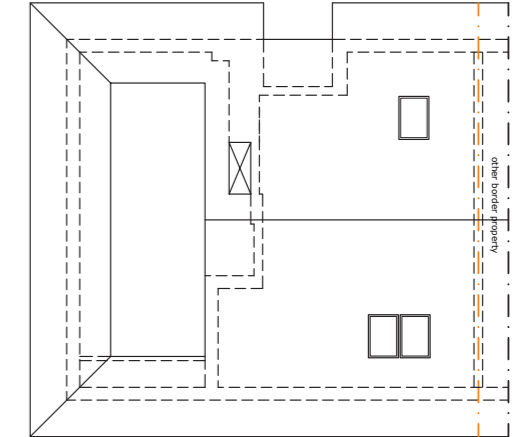
First floor



Second floor

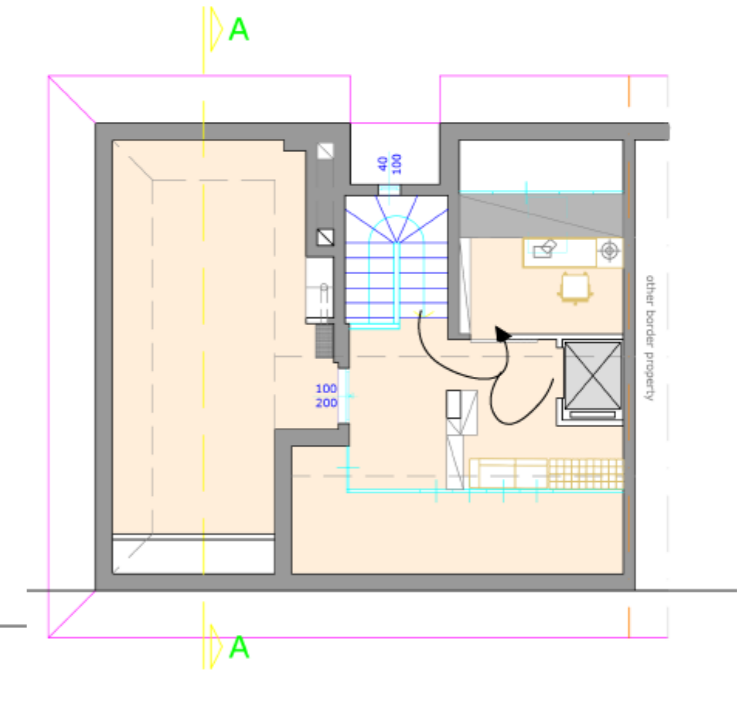
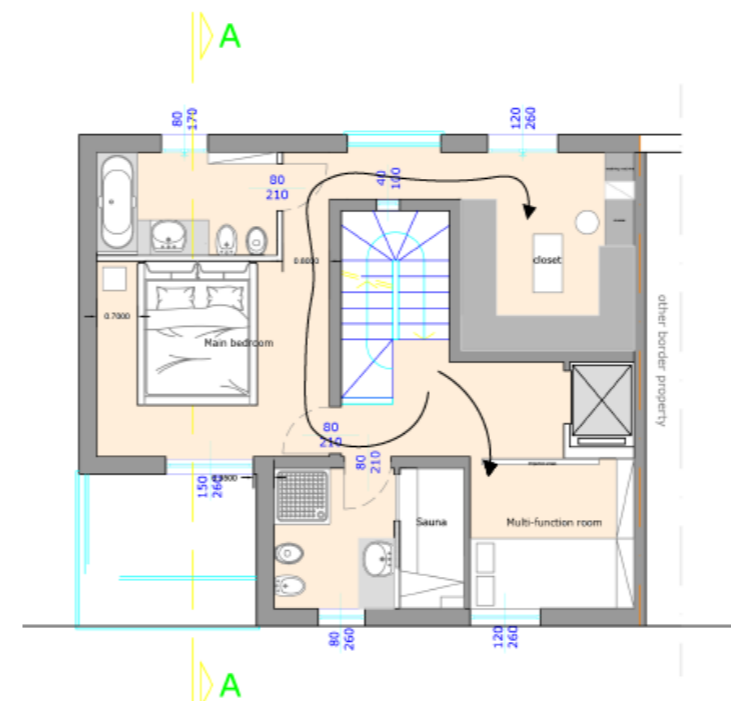
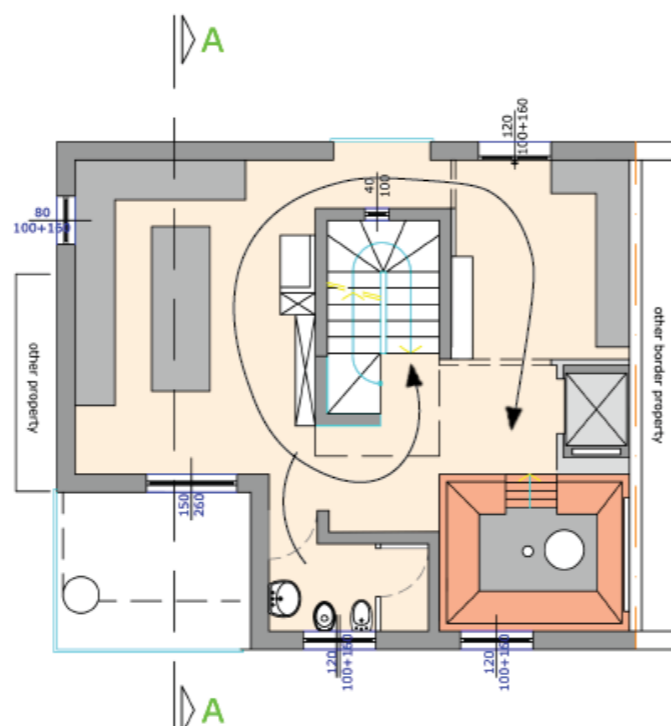
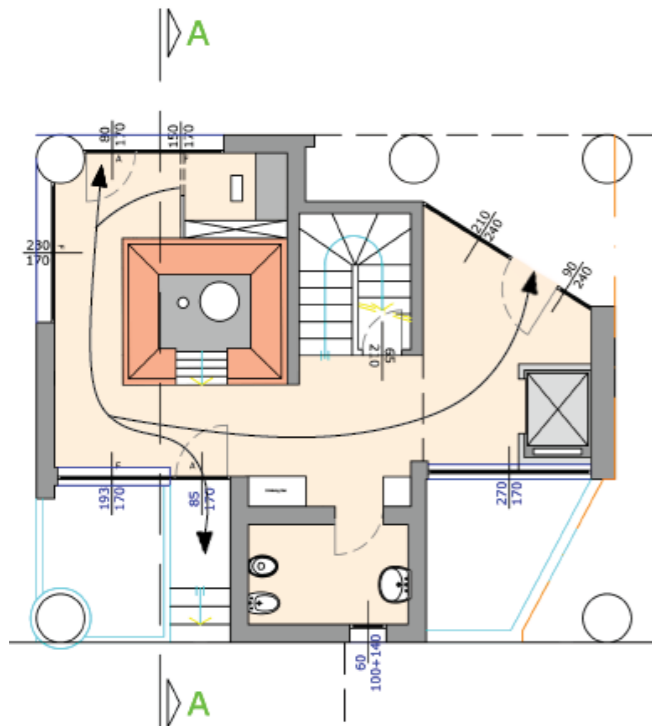


Third floor



Roof

Circulation diagram



RENDERINGS

Living room -Ground floor



Kitchen - First floor



Chatting Space-First floor



Dining room-First floor



Bedroom -Second floor



Bedroom -Second floor



Sauna-Second floor



Attic



Multi-function space -Second floor



